



WELCOME TO CHIRAPA MANTA

ECOLOGDE - RETREAT CENTER



ABOUT US

**WE INVITE YOU TO ENCOUNTER
YOUR TRUE SELF IN AN
AUTHENTIC CONNECTION WITH
NATURE.**

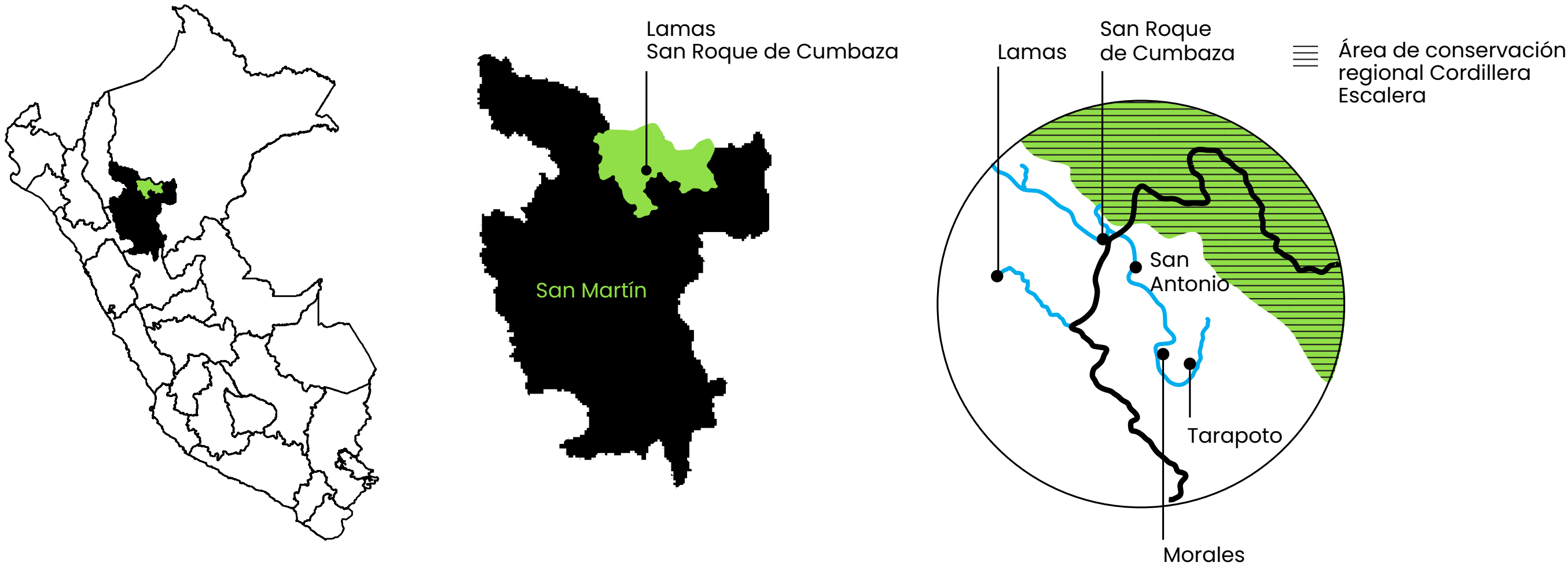
We have created a space integrated with nature to make your stay with us as inspirational and transformative as possible. Our infrastructure is made out of noble materials such as cob and wood, our different spaces are surrounded by the tropical mountain jungle and we are located at the edges of the 'Cumbaza' River fresh waters. One and all, a friendly environment to enjoy the Peruvian Jungle.

OUR LOCATION

SAN ROQUE DE CUMBAZA

We are located in ‘*San Roque de Cumbaza*’, a 30 minutes drive from Tarapoto. Situated at the upper edges of the ‘*Cumbaza*’ River and in between the conservation area known as ‘*Cordillera Escalera*’

📍 HOW TO GET THERE?
We can coordinate transportation for you with local drivers of our trust:
S/. 30 one-way trip in mototaxi
S/. 70 one-way trip in taxi





OUR SERVICES

PER NIGHT

**Minimum stay: 2 nights*




IT INCLUDES:

-  Breakfast
-  WIFI
-  Kitchen
-  Daily Cleaning

LONG STAY

**Doesn't include breakfast*

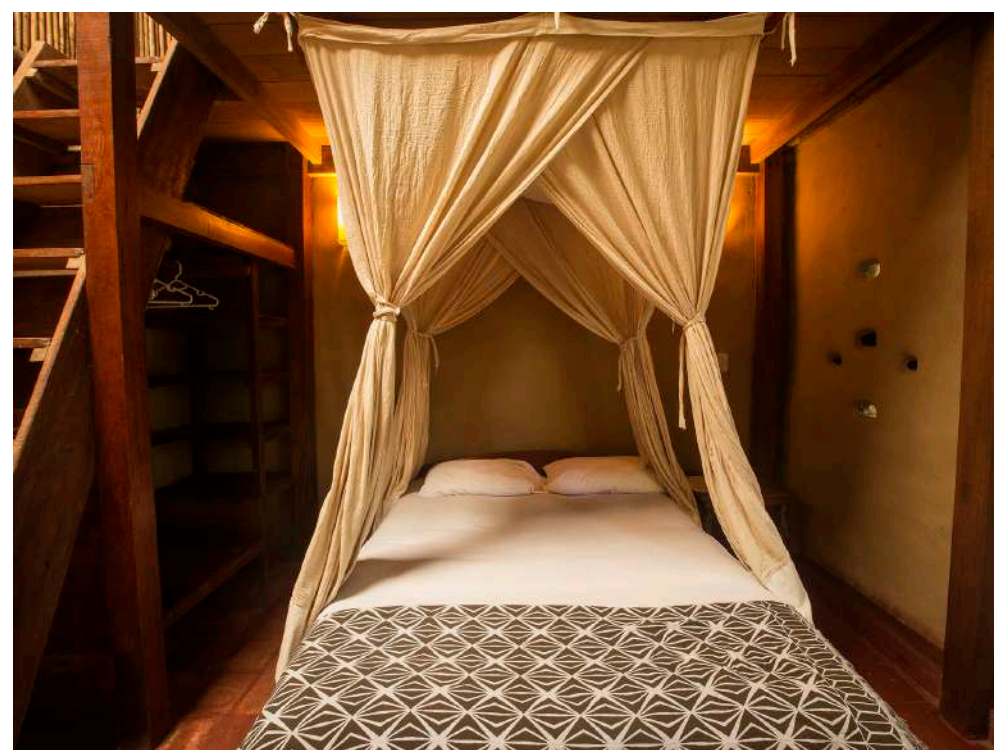
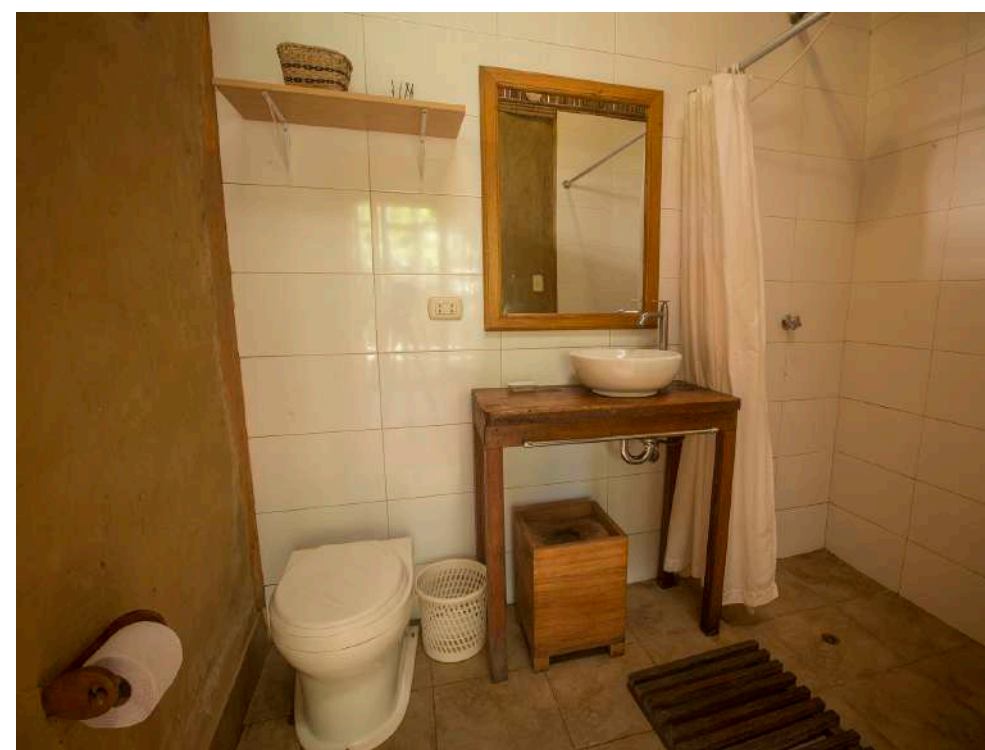
IT INCLUDES:

-  WIFI
-  Kitchens
-  Daily Cleaning

IMPORTANT INFO

**Check-In: 1 pm / Check-Out: 11 am*

**Extra bed or person: S/ 50 per night,
breakfast included.*



ROOMS

YACUMANTA

MATRIMONIAL OR DOUBLE ROOM

- Room with 1 double bed and a single bed on the mezzanine.
- Private bathroom
- Terrace and river view.

**The double option includes both beds. Available for families with kids younger than 5 years old, without additional cost.*



PER NIGHT

Simple	Double or Matrimonial
S/ 110	S/ 165

LONG STAY

	Simple	Double or Matri
Weekly	S/ 530	S/ 780
Fortnight	S/ 850	S/ 1220



ROOMS

YACUMANTA

MATRIMONIAL OR DOUBLE ROOM

- Room with 1 double bed and a single bed on the mezzanine.
- Private bathroom
- Terrace and river view.

**The double option includes both beds. Available for families with kids younger than 5 years old, without additional cost.*

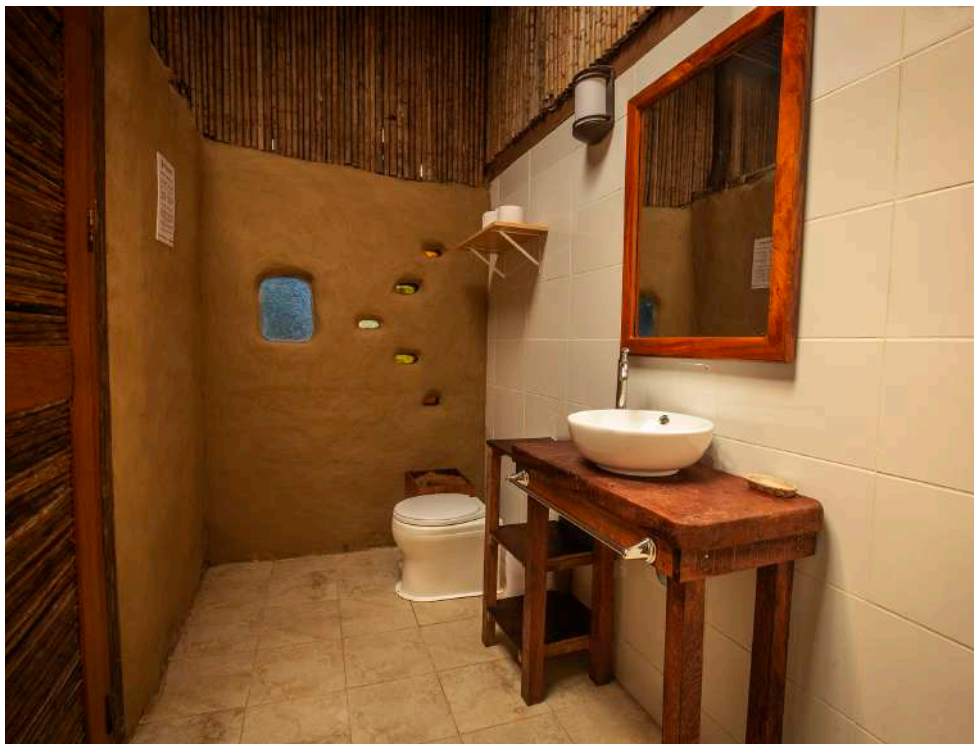


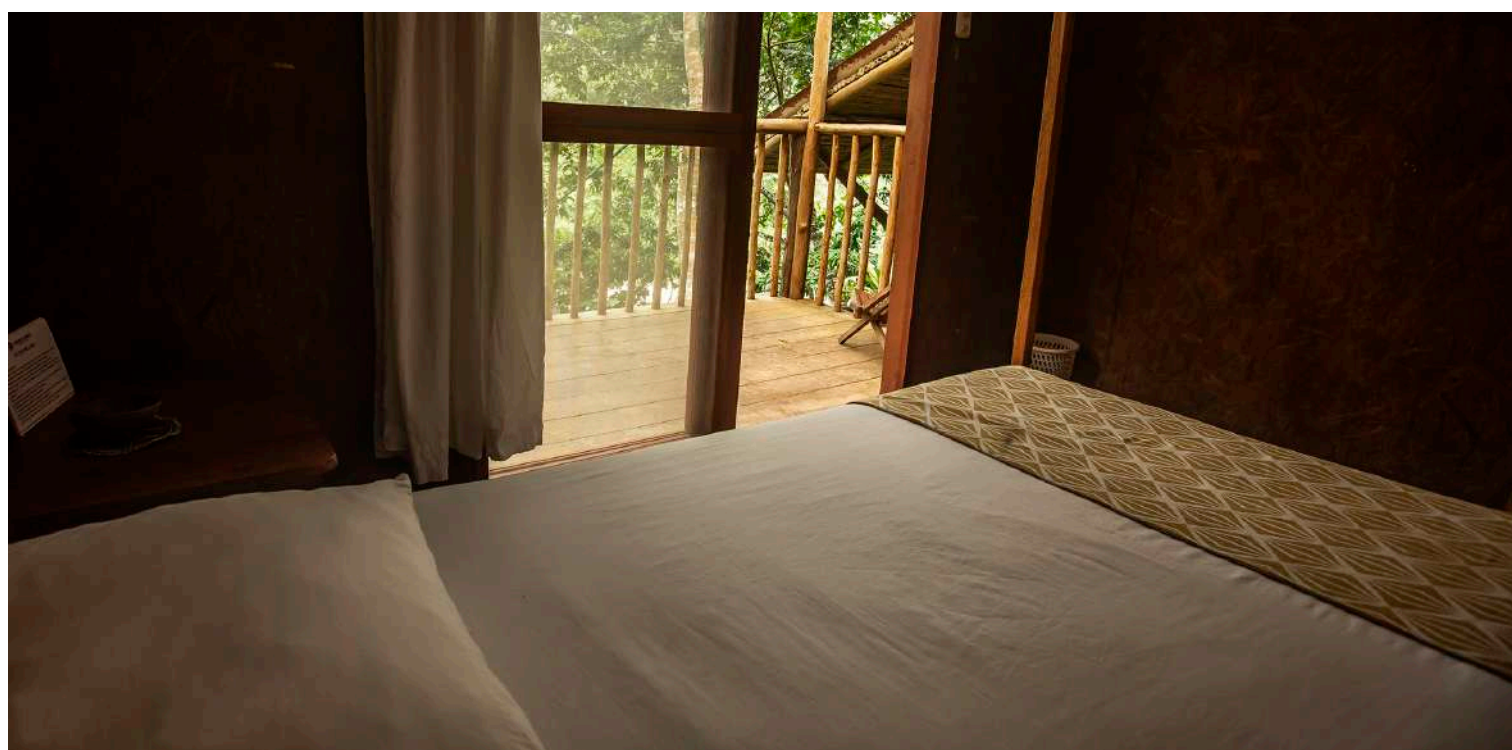
PER NIGHT

Simple	Double or Matrimonial
S/ 110	S/ 165

LONG STAY

	Simple	Double or Matri
Weekly	S/ 530	S/ 780
Fortnight	S/ 850	S/ 1220





ROOMS

YACUMANTA SECOND FLOOR

MATRIMONIAL OR DOUBLE ROOM

- Room on the second floor with 1 double bed and a single bed.
- Private Balcony with river view.
- Private bathroom on the first floor.



PER
NIGHT

Simple	Double or Matrimonial
S/ 100	S/ 150

LONG
STAY

	Simple	Double or Matri
Weekly	S/ 480	S/ 750
Fortnight	S/ 750	S/ 1 120



ROOMS

QUILLAMANTA DOUBLE I

- Spacious double room Located at the end of a small hike to the top of the ecolodge.
- Outside shared bathroom area with hot water and a view of the jungle.



PER
NIGHT

Simple	Double or Matrimonial
s/ 80	s/ 130

LONG
STAY

	Simple	Double or Matri
Weekly	s/ 390	s/ 610
Fortnight	s/ 590	s/ 920





ROOMS

QUILLAMANTA DOUBLE II

- Spacious double room Located at the end of a small hike to the top of the ecolodge.
- Outside shared bathroom area with hot water and a view of the jungle.



PER
NIGHT

Simple	Double or Matrimonial
s/ 80	s/ 130

LONG
STAY

	Simple	Double or Matri
Weekly	s/ 390	s/ 610
Fortnight	s/ 590	s/ 920





ROOMS

INTI MANTA SUITE

- Spacious and intimate bungalow with private terrace, river view, and interior bathroom.
- Available for 2 guests, as double or matrimonial. With 1 king size bed or 2 single beds.

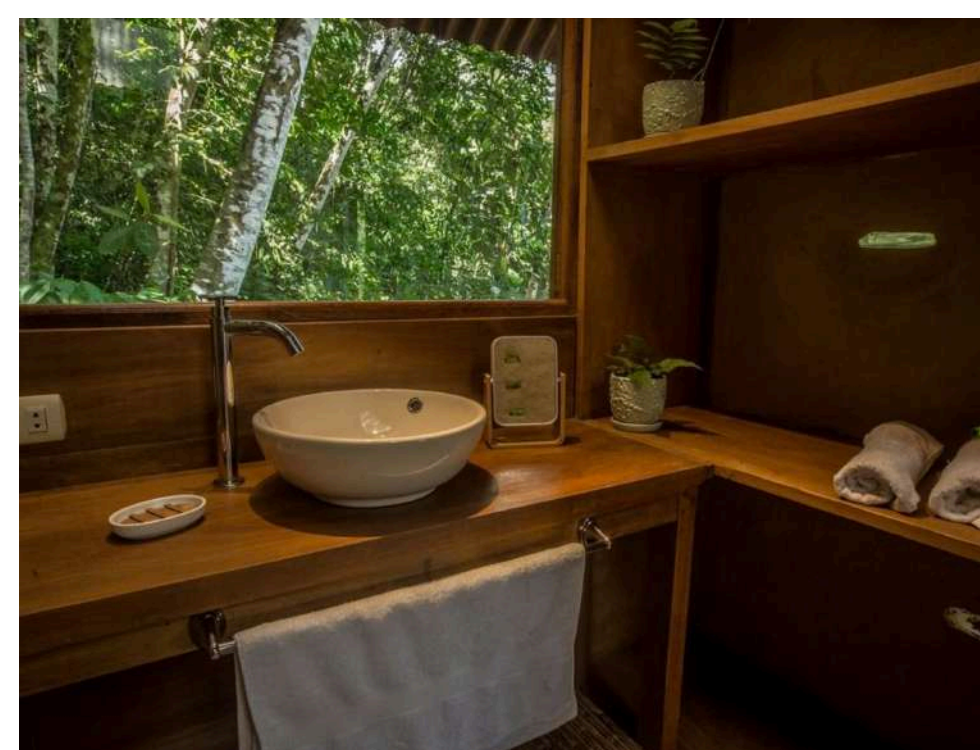


PER
NIGHT

Double or Matrimonial

S/ 210

*NOT AVAILABLE FOR LONG STAYS.





OUR FOOD

CONSCIOUS NUTRITION

The body is our most sacred temple and the most perfect physical manifestation of the human being. We have the wonderful opportunity to honor and nourish it with love. That is why we offer healthy, vegetarian/vegan, and high-quality locally sourced food. Nevertheless, we adapt to any meal plan the retreat organizer wants to offer.

We create the menu, considering your retreat diet style, or we can give you our own menu so you can design your meal plan.



OUR FOOD

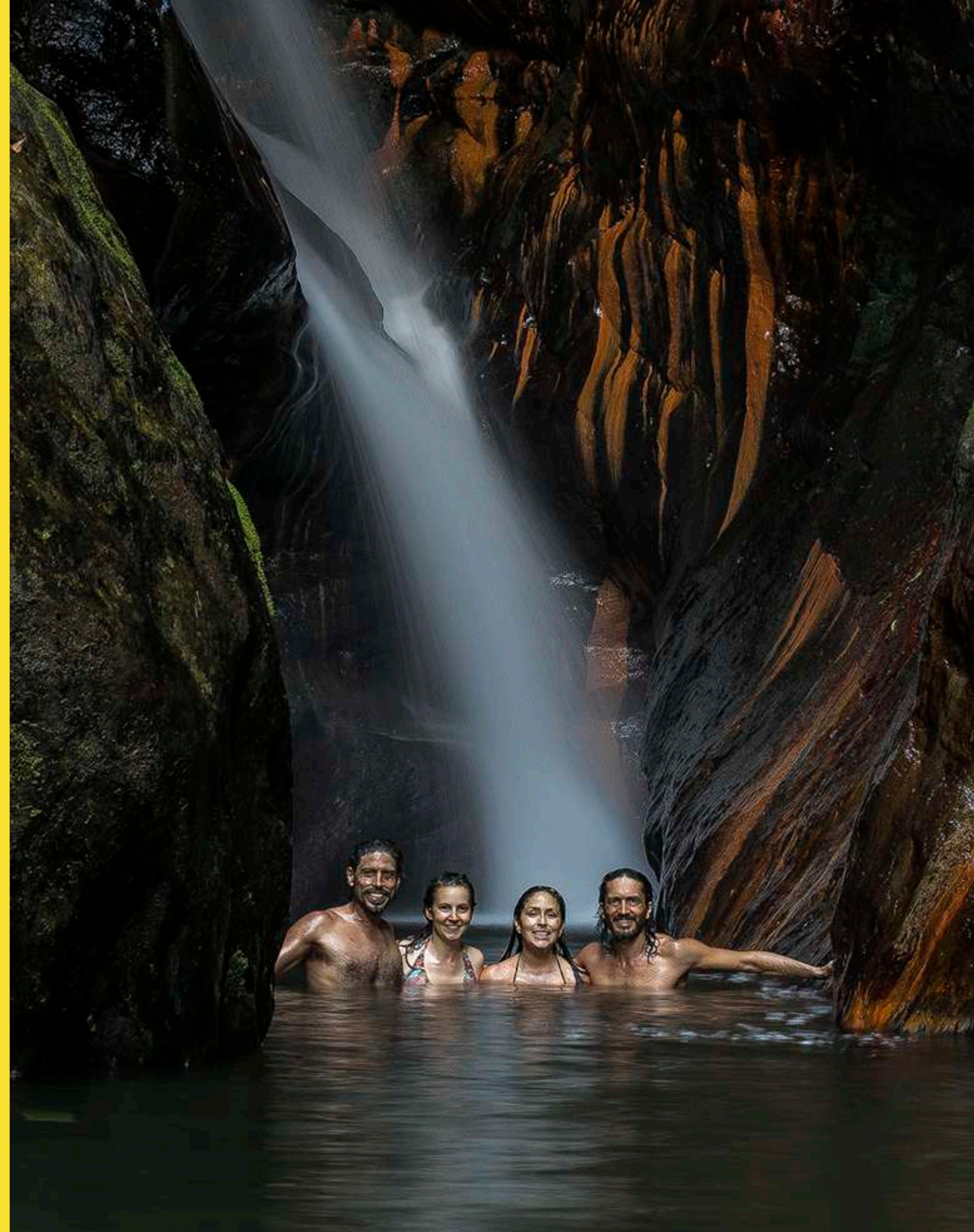
CONSCIOUS NUTRITION

The food service works as a **delivery** vegan menu.

We offer the option to eat at a local cook home, with this option you pay a lower rate directly to them. (in this case, has to be in cash).

Menu	Price
Vegan Lunch	s/ 20
Vegan Dinner	s/ 20
Kids Menu	s/ 15

**All menu requests should be informed the day before or by 10:00 am the same day.*





¡THANK YOU!

CHIRAPA MANTA
CARR. SAN ROQUE DE CUMBAZA KM 16.1
CHIRAPAMANTA@GMAIL.COM
CHIRAPAMANTA@ECOLODGE
CHIRAPAMANTA.COM